

# SAI360 GRC Best Practices

Driving Operational Efficiency Through  
Proven GRC Best Practices

June 2025



# Agenda

- Centralized GRC Employee Portal
- AI Assistant for GRC
- Flexible Class Configuration
- Intuitive Portlet Configuration
- Personalized Workspace
- No-Code Workflow Configuration
- Streamlined Assessments

# Centralized GRC Employee Portal

A single access point for employees to navigate all GRC-related tools, resources, and tasks—eliminating silos and simplifying user experience.

## Key Benefits:

- Unified access to all GRC content and modules
- Improved user experience and productivity
- Reduces time spent searching for resources

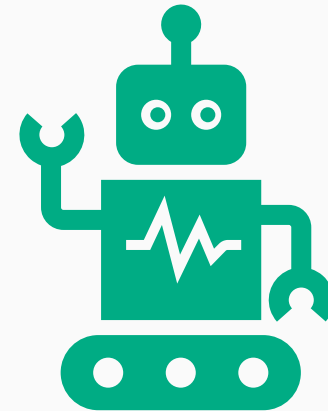


# AI Assistant for GRC

Built-in AI assistant provides real-time insights, predictive suggestions, and guided navigation to optimize decision-making and operational efficiency.

## Key Benefits:

- Accelerates issue identification and resolution
- Enhances risk and compliance decisions
- Reduces manual analysis workload



# Reference to Local GRC Library

Easily access curated policies, procedures, and templates to support governance, risk, and compliance activities.

## Key Benefits:

- Simplifies navigation of complex GRC programs
- Supports standardization and consistency
- Improves knowledge sharing across teams

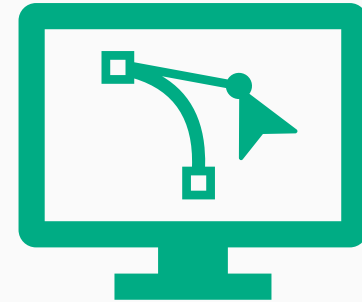


# Flexible Class Configuration

Create and modify data structures using intuitive tools to reflect organizational needs and evolving GRC requirements.

## Key Benefits:

- Adapts quickly to changing business needs
- Supports custom risk, control, and issue attributes
- No need for technical development resources



# Intuitive Portlet Configuration

Design and personalize user dashboards through no-code configuration to ensure relevant, role-specific views.

## Key Benefits:

- Empowers business users to self-configure
- Streamlines user interaction with GRC data
- Improves adoption through tailored experiences



# Personalized Workspace

Design and tailor user workspaces to align with individual roles, responsibilities, and priorities—ensuring each user sees what matters most.

## Key Benefits:

- Enhances user focus and efficiency
- Reduces clutter and irrelevant data
- Supports streamlined navigation and task execution

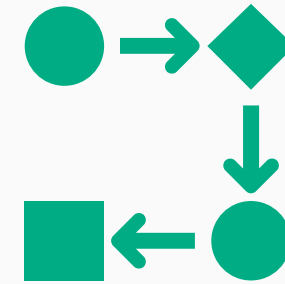


# No-Code Workflow Configuration

Build and automate end-to-end GRC workflows using visual tools—no development required.

## Key Benefits:

- Empowers business users to self-configure
- Streamlines user interaction with GRC data
- Improves adoption through tailored experiences



# Streamlined Assessments

Build, modify, and manage assessment templates across risk, compliance, and audit domains using configurable logic and scoring—without writing code.

## Key Benefits:

- Enables tailored assessments by risk type, business unit, or framework
- Ensures consistency and repeatability across evaluations
- Accelerates deployment through reusable templates and automation

